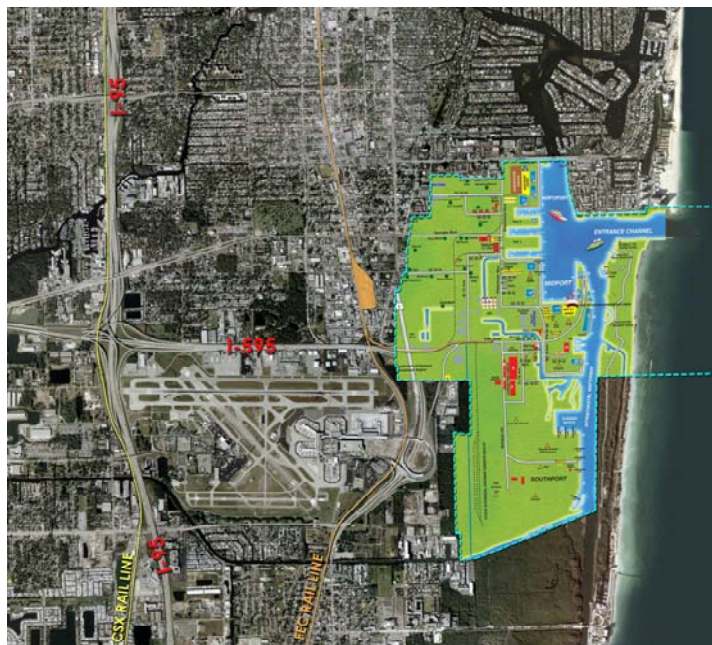


# PORT EVERGLADES MASTER PLAN UPDATE

SWC (Sandra Walters Consultants, Inc.) is in charge of all environmental components of the Port Everglades Master Plan Update. Work has involved:

- site recognition of upland and marine Port facilities;
- collecting current data on all existing submerged and emergent wetland habitats in and near the Port and entrance channel, including mangroves, seagrasses and corals;
- collecting current data regarding all listed species in and near the Port, including Acropora corals, manatees, smalltooth sawfish, and wood storks;
- collecting current data regarding existing and potential contamination sources on the Port property;
- analyzing existing conditions and proposed Port and entrance channel expansion plans in relation to environmental impacts and permitting requirements;
- assessing alternative plans for moving the conservation easement associated with expansion of the Turning Notch that includes 8.7 acres of mangrove impacts, as well as mitigation plans;
- assessing the impacts of sea level rise to future Port plans,
- preparing text and illustrative figures for relevant sections of the master plan update document;
- extensive agency coordination and participating in agency and public involvement meetings;
- addressing questions and comments from agencies and the public regarding environmental elements of the Plan Update; and
- preparing text to incorporate environmental sections of the finally-adopted Plan Update into the Broward County Comprehensive Plan.



PORT EVERGLADES Draft NED Plan

